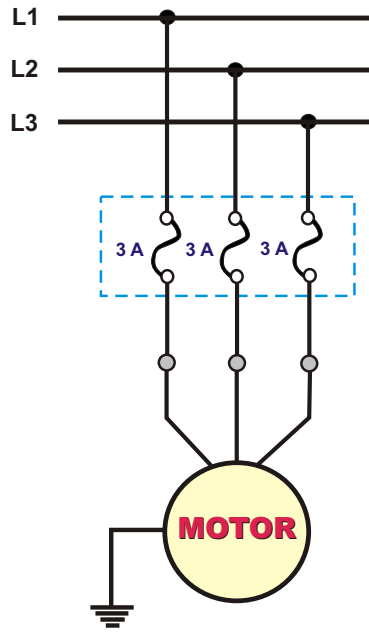
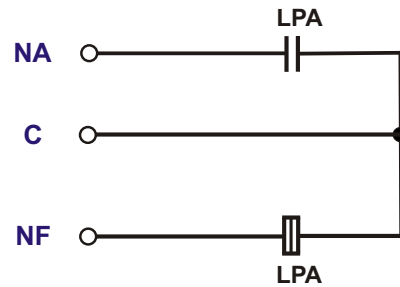


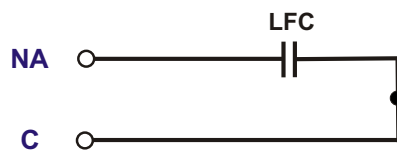
**LIGAÇÃO ELÉTRICA DO OPERADOR DE PORTAS E - 2.000**



**LIMITE DE PORTA ABERTA  
LPA**



**LIMITE FIM DE CURSO  
LFC**

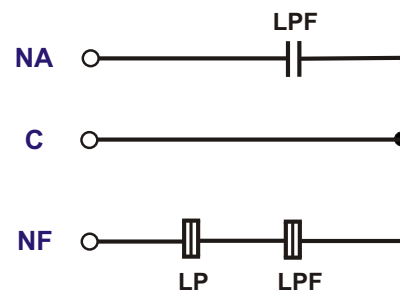


**ATENÇÃO**

Ligar o limite LFC na série de segurança do elevador.

Ex: Contato de Trinco, 40, 41, etc.

**LIMITE DE PORTA FECHADA  
LPF**



**LP:** Limite de proteção para quebra do cabo de aço.